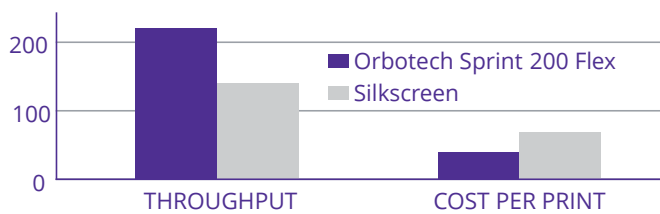


Orbotech Sprint™ 200 Flex

High Quality Inkjet Printing for Flex PCB

Orbotech Sprint 200 Flex is KLA's first PCB legend printer designed specifically for the unique requirements of mass production, flexible PCBs. Delivering multi-panel handling as well as advanced registration and serialization tools for thinner flexible PCBs, Orbotech Sprint 200 Flex offers manufacturers breakthrough performance for high-volume and top quality legend and serialization printing over a range of flex PCB materials. Built on KLA's successful Sprint series for PCB legend printing and powered by the company's unique DotStream Pro™ technology, Orbotech Sprint 200 Flex offers manufacturers a superior yield and low total cost of ownership (TCO), making it the obvious choice to replace legacy, time consuming and environmentally harmful screen printing technology.



High throughput - up to 6,000 prints/day
Optimized cost per print



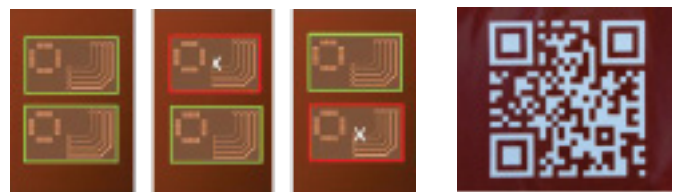
Superior printing quality and high depth of focus (DOF)

Orbotech Sprint 200 Flex - Improving Yield and Saving Costs for Legend Printing on Flex Materials

- Proven inkjet solution for flex and rigid-flex with multi-panel printing – up to 6,000 sides/day*
- Excellent printing quality, high depth of focus (DOF) and advanced registration features with multiple target on-the-fly alignment
- Superior 2D barcode printing features
- Multi-level serialization support
- Enhanced yield and low total cost of operation (TCO) compared to silkscreen

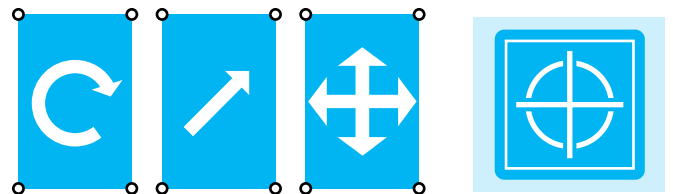
* 9.4" x 14.2" (250mm x 360mm) Flex sheet - loading 3 at a time, multi-carrier operations

Advanced tools for product traceability and quality control



Defective marking

Serialization and barcodes



High accuracy printing with comprehensive registration and scaling features

Orbotech Sprint Series Proven Benefits

- Unparalleled performance with DotStream Pro technology
- High volume production with top quality and accuracy
- Cost-effective, field-proven, industrial inkjet printing solutions - intuitive, flexible, eco-friendly operation

Specifications

Throughput*	Pin alignment Up to 320 prints/hour	Pin and camera alignment Up to 260 prints/hour
Maximum Panel and Image	9.8" x 17.7" (250mm x 450mm)	
Minimum/Maximum Panel Thickness	4 - 80 mils (0.1mm - 2.0mm)	
Minimum/Maximum Resolution	720 - 1440 dpi	
Minimum Line**	3mil (75µm)	
Minimum Text Height***	12mil (0.3mm)	
Registration Accuracy (FTG)	±1.4mil (±35µm)	
Depth of Focus	60 mil (1.5mm)	
Alignment	Possibility of pin alignment or CCD alignment per panel (up to 4 targets per panel) Automatic on-the-fly alignment	
Print Mode	Side A-A or side A-B	
Print Head	Minimum drop volume - 13 pl; minimum dot size - 70µm (Optional: minimum drop volume - 6 pl; minimum dot size - 60µm)	
Number of Nozzles	2,048	
Software	Software RIP, Windows, Gerber RS-274X input, Push to Print, multi-language; advanced tools for serialization and 2D barcode	
Ink Types, Standards and Certifications	Multiple inks from leading suppliers UL 94V-0, MIL-55110, MIL-31032, ASTM E 595, IPC-650, IPC-4781, AA-56032D Type II, RoHS, REACH, Halogen-free	
Dimensions W x D x H	63.8" x 72.8" x 63" (1620mm x 1850mm x 1600mm)	
Weight	3,307lbs (1,500Kg)	

Note: In case of legend printing with more than 50% PCB area coverage, Orbotech Sprint 200 Flex requires at least two-pass printing mode.

* 250mm x 360mm panel, 0.2" margin, pin alignment (and 3 targets in case of camera alignment). Loading 3 panels at a time.

** Lines of 75µm require 6 pl print head, special printing modes and well controlled solder mask surface tension

*** Requires 6 pl print head. Recommended to use two-pass mode or more.

The above specifications are subject to change without notification

Orbotech Sprint inkjet printers are a class-1 laser product. Laser specifications: red laser, 650nm, 3mW max.

KLA SUPPORT

Maintaining system productivity is an integral part of KLA's yield optimization solution. Efforts in this area include system maintenance, global supply chain management, cost reduction and obsolescence mitigation, system relocation, performance and productivity enhancements, and certified tool resale.

© 2022 KLA Corporation. All rights reserved worldwide. KLA reserves the right to change the hardware and/or software specifications without notice. Orbotech is a registered trademark of Orbotech Limited, a KLA company. KLA and the KLA logo are registered trademarks of KLA Corporation. All brands or product names may be trademarks of their respective companies.

KLA Corporation
One Technology Drive
Milpitas, CA 95035
www.kla.com

Rev 2.0_3-28-2022